

Leveraging **AI** for a More **Strategic Company**  
**Secretary**

# Who are we ??

The company was founded over twenty years ago and with over 30 000 unique users from across 4 continents.

TeamEngine has offices located across the globe, including Sweden, UK, Germany, Mauritius and now SOUTH AFRICA.



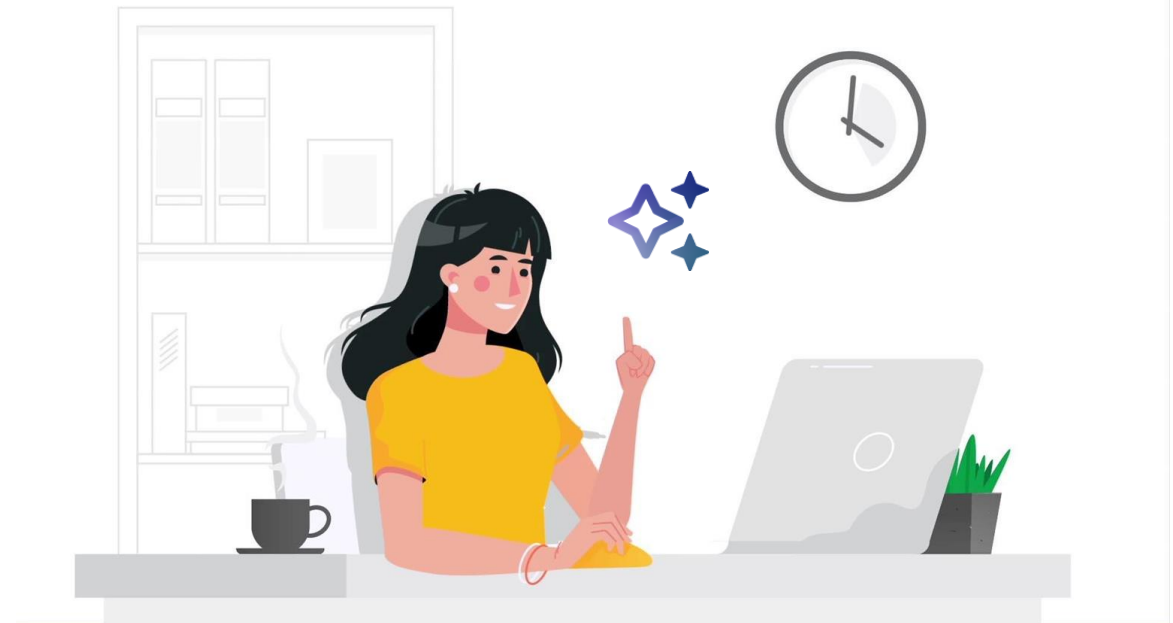
# What do we do ??

- Board and management collaboration.
- Insider and crisis management, Due diligence.
- Board evaluations.



# Why are you here??

- Introduce ourselves to the SA market.
- Provide the benefit of some European flavour.
- Passionate about good governance



# Leveraging AI for a More Strategic Company Secretary



- **AI-Powered Document Review:**  
Automate the review of legal and regulatory documents to ensure compliance.
- **Regulatory Monitoring:**  
Use AI to monitor changes in laws and regulations, ensuring the company stays compliant.
- **Automated Reporting:**  
AI can help generate accurate, timely reports for board meetings and regulatory filings.

# Enhancing Decision-Making with **AI Insights**

- **Data-Driven Insights:** AI can analyze large datasets to provide actionable insights for strategic decision-making.
- **Predictive Analytics:** Forecast trends and potential risks, enabling the Company Secretary to advise the board more effectively.
- **Scenario Analysis:** AI can model different scenarios, helping to evaluate the potential impact of strategic decisions.

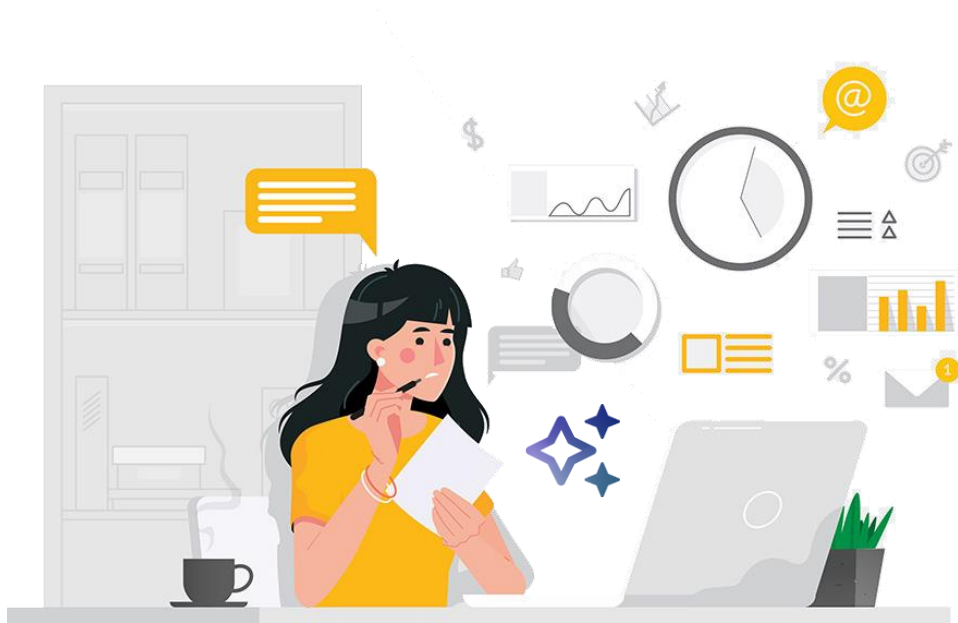


# Automating Routine Tasks for Greater Efficiency

- **Meeting Preparation:** AI can automate the preparation of board packs, agenda items, and follow-up tasks.
- **Document Management:** Streamline document storage, retrieval, and version control using AI-powered systems.
- **Communication Automation:** AI can help manage communications, ensuring timely responses and updates.



# Transforming the Company Secretary into a **Strategic Partner**



- **Elevating the Role:** With AI handling routine tasks, the Company Secretary can focus on strategic advisory roles.
- **Future-Ready Governance:** Use AI to stay ahead of emerging governance trends and best practices.



# Contact us!

**Phone:** +27 1063 44 100

**Email:** [Info@teamengine.com](mailto:Info@teamengine.com)

**Address:**

TeamEngine South Africa  
2 Bruton Road, Bryanston  
Johannesburg, 2191  
South Africa